

SME and Me

Dream it, Then Build it

How can Proteomic scientists keep track of samples

- Annotation
- Volume
- Location
- Project
- Workflow

without going back and forth between their office desktop (Thermo Nautilus) and Lab?

First use of hand held mobile technology in LAB (2005)

- ✓ Introduction of wireless (Wi-Fi 802.11/b) PDA with built in barcode scanner (Symbol MC50).
- ✓ Small and light weight (5 x 3 x 1 in, 6.4 oz)
- ✓ High resolution color display
- ✓ Touch sensitive screen (stylus)
- ✓ Reliable integrated laser barcode scanner.
- ✓ Wi-Fi (802.11/b) - Standard internet protocol
- ✓ Good application development environment

Features of the Nautilus PDA application

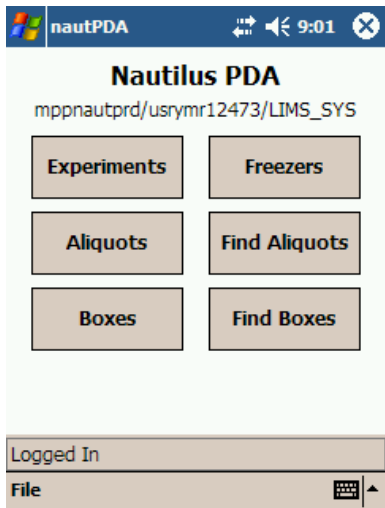
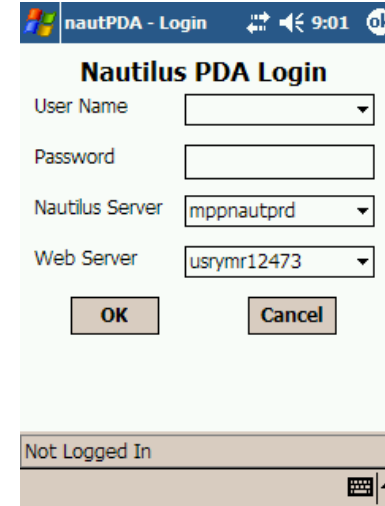
- ✓ Developed Apache XML based web server
- ✓ Track samples via Bar Code
- ✓ Access sample annotation
- ✓ Manage the Freezers
- ✓ Tree visualization of freezer, shelf, rack, plates
- ✓ Easily Find samples using menu queries
- ✓ **2 years before the iPhone was released**

Wi-Fi PDA screen shots



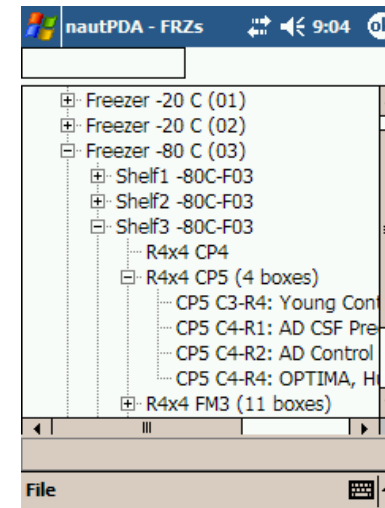
← Symbol MC50

Login Screen →



← Main Menu

Freezer →
Management



Wi-Fi PDA screen shots (continued)

nautPDA - Sample 1 9:07

PBC P N

Field	Value
Aliquot Name	AD-26748001-CSF-3-1-AD
Barcode	M293
Current	1000ul
Aliquot Type	Storage
Freezer	Freezer -80 C (03)
Shelf	Shelf3 -80C-F03
Rack	CP5 C4-R1
Box	C1-R1
Box BC	B26
Create User	Paweletz, Cloud P.
Create Date	2005-08-16

AD-26748001-CSF-3-1-AD Precision MED

File

← Sample Annotation

Sample Query →

nautPDA - Finder 9:10

Find Clear Reset

Pick User Pick Species

Pick Type Pick Matrix

Pick Program Pick Compound

Pick Project Not In Box

Volume 0 100000

Comments

Received 11/17/05 11/17/05

Created 11/17/05 11/17/05

Harvest 11/17/05 11/17/05

File

nautPDA - Finder 9:12

Find Clear Reset

Pick Created By Pick Rack

Pick Freezer Pick Owner

Pick Shelf Not In Freezer

Description

Created 11/17/05 11/17/05

File

← Box Query

Sample → Location

nautPDA - Box 9:06

PBCs Scan In

C:1 R:1 - M293 Vol: 1000
AD-26748001-CSF-3-1-AD Precision MED

OK Prev Next

█									

AD CSF Precision Med

File